



**4<sup>th</sup> Floor**

ELIZABETH HOUSE

**It's  
good  
to  
see  
you.**

The 4th Floor at Elizabeth House directly next to Waterloo Station has been refurbished to provide 7,500 sq ft of flexible workspace for small businesses to develop and start-ups to flourish.

# Benefits



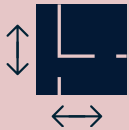
Fully furnished office



Break-out area



Various sized meeting rooms



Different room sizes



Amazing views of London



WiFi

- Secure and 24 hour access
- Fully furnished
- Break-out space

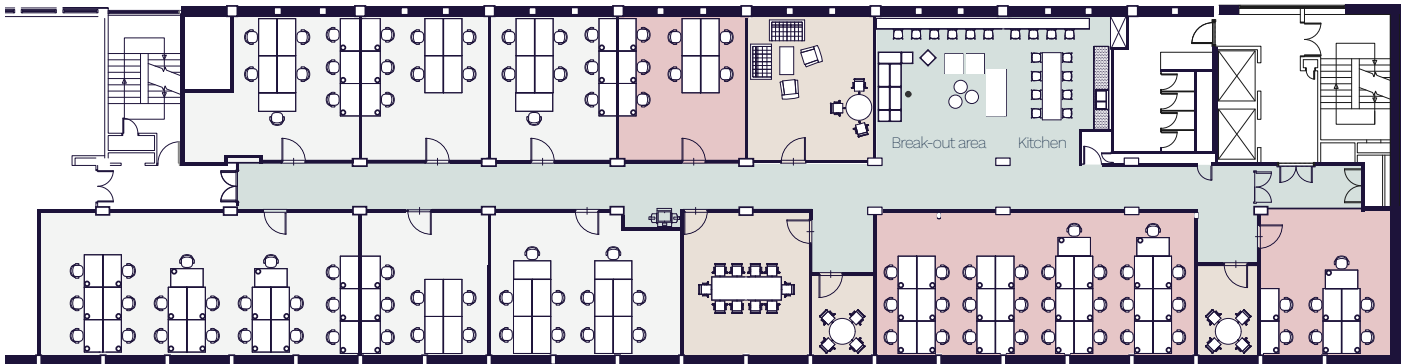
- WiFi & Hi speed printing
- Large meeting room with TV (10 pers)
- Informal meeting room (8 pers)
- Utilities & cleaning

- Cycle parking
- Kitchen
- Coffee & tea





## We've saved you a seat...



### Availability:

**Private offices: from 7 - 26 person - LET**

**Private offices: available space**

**Meeting rooms**

**Terms: 6 month license, 3 months rolling thereafter**



# Inspiration

this way



## Contact

hbreavis



Aneta Popiel

[aneta.popiel@hbreavis.com](mailto:aneta.popiel@hbreavis.com)

+44 (0)7741 656 425

Nick Oakley

[nick.oakley@hbreavis.com](mailto:nick.oakley@hbreavis.com)

+44 (0)7769 310 830

[4thfloorelizabethhouse.co.uk](http://4thfloorelizabethhouse.co.uk)